

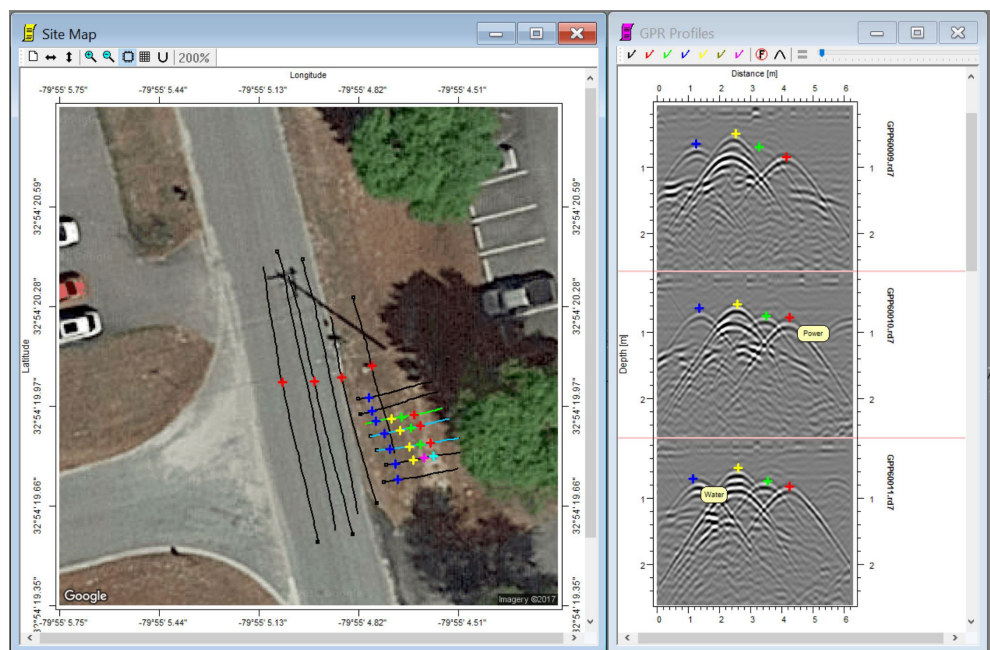
MALÅ Object Mapper 2018

Visualization Software

MALÅ Object Mapper is an easy-to-use visualization software that is developed for processing, analysis and interpretation of Ground Penetrating Radar data acquired by MALÅ GPR systems – including MALÅ Easy Locator Pro WideRange.

*Left: Site Map window.
A Google map image is visible when GPS positioning data and internet connection is available. Color-markers identify each object in every parallel GPR profile.*

*Right: Data View window.
Visualization of several profiles simultaneously*



Ease of Use and Productivity

MALÅ Object Mapper was created to answer the need for an easy-to-use software for interpretation of utility detection GPR data. The software is best used with Object Mapper projects created by MALÅ GPR equipment. Object Mapper is appreciated by its users for its simplicity and effectiveness to deliver results.

The software supports both Object Mapper GPS projects and Baseline projects. A GPS project is utilizing positioning coordinates from a GPS receiver and a Baseline project acquires coordinate points with reference to a physical Baseline drawn up at site. Object Mapper works with two main windows, one Data View and one Site Map.

If GPS positioning data is available and if connected to the internet, the Site Map will also include a Google map image of the project and the positions of the data profiles.

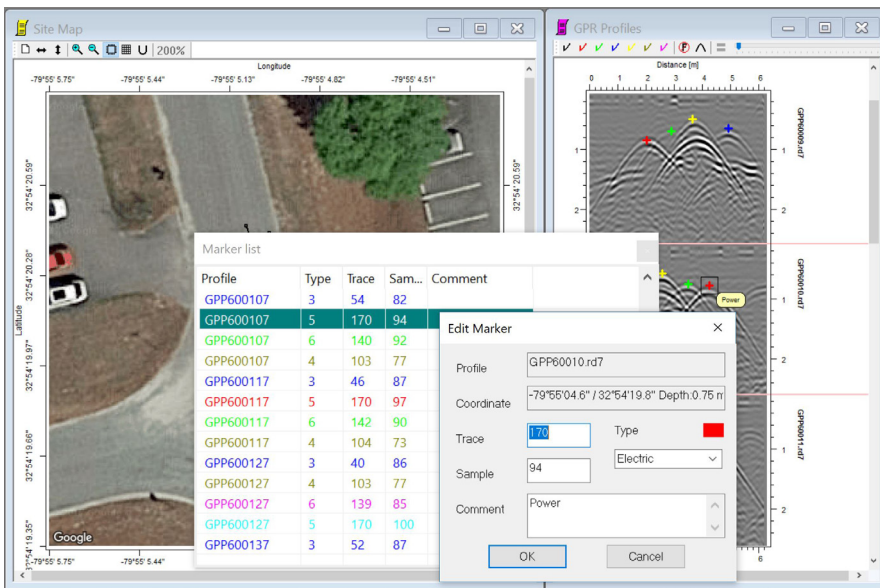
The handling and interpretation work is straightforward and simple. Select a color-marker from the Data View window and identify each object in every parallel GPR profile. The Site Map will then help answering if the markers line up in a probable way. Interpreted results can be exported to CAD/GIS software through DXF.

Object Mapper 2018 – Software News and Highlights

The most apparent change with the Object Mapper 2018 software is the support for online maps. Currently the software supports Google maps and the plan is to extend the support to other online map flavors in the future. The map support increases the usefulness of GPS projects and helps in both interpreting the results and with reporting on projects.

Features

- ▷ Straight forward interface for handling of GPR utility data
- ▷ Easy-to-use and effective software with focus on producing results
- ▷ On-line map support (Google Maps)
- ▷ Support for both 16 and 32 bit data formats (rd3 and rd7)
- ▷ Import of the MALÅ Easy Locator Pro WideRange HDR data
- ▷ Support for both Lat./Long. and UTM coordinates
- ▷ Simultaneous filtering of all profiles
- ▷ Parallel profile view
- ▷ Edit projects in Project Manager
- ▷ Edit markers in Marker Manager
- ▷ Fully functional, time-limited, demo license available
- ▷ Upgrade path from earlier versions



Object Mapper 2018 includes improved editing of projects through the use of the Project Manager (not in image) and the Marker Manager.

System requirements

- ▷ Windows 10, Windows 7, XP
- ▷ At least 128Mb RAM

Guideline Geo is a world-leader in geophysics and geo-technology offering sensors, software, services and support necessary to map and visualize the subsurface. Guideline Geo operates in four international market areas: Infrastructure – examination at start-up and maintenance of infrastructure, Environment – survey of environmental risks and geological hazards, Water – mapping and survey of water supplies and Minerals – efficient exploration. Our offices and regional partners serve clients in 121 countries. The Guideline Geo AB share (GGEO) is listed on NGM Equity.



GUIDELINE GEO
Löfströms Allé 6A
SE-172 66 Sundbyberg, Sweden
Tel: +46 8 557 613 00
info@guidelinegeo.com
www.guidelinegeo.com

MALÅ GEOSCIENCE
Skolgatan 11
SE-930 70 Malå, Sweden
Tel: +46 953 345 50
sales@guidelinegeo.com
www.guidelinegeo.com

ABEM INSTRUMENT
Löfströms Allé 6A
SE-172 66 Sundbyberg, Sweden
Tel: +46 8 564 883 00
sales@guidelinegeo.com
www.guidelinegeo.com

MALÅ GEOSCIENCE USA
465 Deanna Lane
Charleston 29492, USA
Tel: +1 843 852 5021
sales@guidelinegeo.com
www.guidelinegeo.com