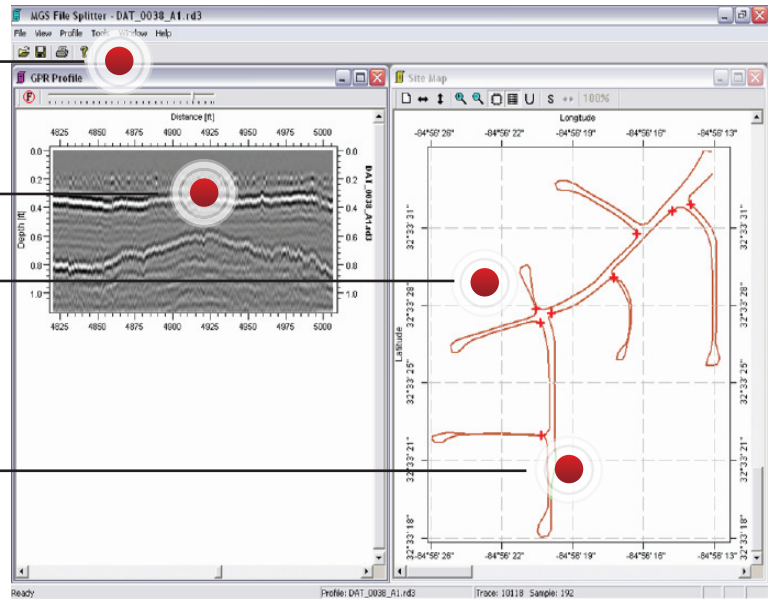


1. Software Window

2. Radar Data

3. Site Map showing the collected radar profile

4. Coordinates, markers or split points



# MALÅ Roadway Mapper

The MALÅ Roadway Mapper software allows the user to define points of reference, based on GPS positioning, for selecting sections of road that are of specific interest for post-processing based on data already collected with the MALÅ ProEx RoadCart system.

The points of reference can be either placed in the field while actually collecting the data, chosen by the user by utilizing the graphic interface or by typing in the desired GPS coordinates in manually.

The MALÅ Roadway Mapper software includes features such as a GPS site map, visualization of the collected radar profile, and corresponding location on the site map, and filtering of the radar data.

No matter what the desired method for dividing the files, the MALÅ Roadway Mapper software offers an easy to use approach for managing longer GPR profiles acquired with a GPS in a cost-effective way.

## Corporate Headquarters Offices

MALÅ Geoscience  
Skolgatan 11, SE-930 70  
Malå, Sweden  
Phone: +46 953 345 50  
Fax: +46 953 345 67  
E-mail: sales@malags.com

USA: MALÅ Geoscience USA, Inc., 465 Deanna Lane, Charleston, SC 29492  
Phone: +1 843 852 5021, Fax: +1 843 284 0684, E-mail: sales.usa@malags.com

China: MALÅ Geoscience (China), Room 2604, Yuan Chen Xin BLDG, No.12 Yu Min Road Chao Yang District, Beijing 100029  
Phone: +86 108 225 0728, Fax: +86 108 225 0815, E-mail: sales@malags.com